



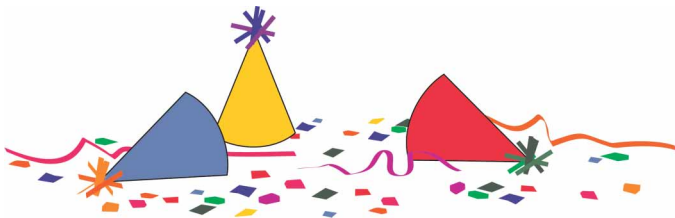
Contemporary Quilt & Fiber Artists January 2004 Newsletter

Upcoming meetings in 2004:
New Dates! New Location!

March 13
May 8
July 10
September 11
November 13

Saturdays at 9:30 a.m.

Activity Room
Community Church
3536 Monroe Street
Santa Clara, CA



HAPPY NEW YEAR NEWS!

Just days after the last minute cancellation of January's meeting comes great news from Virginia King and Karenina Grun-Louie!

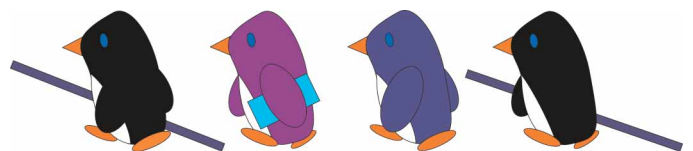
Virginia writes, "A rounding HAPPY NEW YEAR to each of you! CQFA has a wonderful new home! Karenina and I drove around to two churches she had made appointments with to view their meeting rooms (one turned out to be

a gymnasium!) and to talk about rent prices, etc. We have agreed on Community Church of Santa Clara. Both of us feel that our members will LOVE this new spot.

We do apologize to any member who finds the location to be a deal breaker for them; we actually looked at the membership list to see where the most members came from. Since San Francisco and the East Bay had the fewest members and since Mt. View locations were all too expensive, we looked south of Mt. View for the new home.

We have rented the Activity Room and adjacent "Snack Room" which even has a refrigerator we can use! There are two bathrooms (yes, we can take over the Men's if necessary they said). The lighting is good, the floor carpeted, the heat right up there and everyone we met from Community Church was most pleasant, cooperative and happy to have us! This church is located at 3536 Monroe Street, Santa Clara, CA for those of you that use Mapping software to get driving directions. Oh, and there is a load of parking in this location that is an easy turn from Lawrence Expressway.

We have also changed the meeting dates since meeting on the first Saturday of the odd months had us conflicting with New Year's Day, Memorial Day, July 4th and Labor Day weekends trips. We will now meet on the **second** Saturday of the odd-numbered months. Hopefully this will not pose a problem for anyone."



NEWS FROM OUR MEMBERS

THERESE MAY ART QUILT EXHIBIT

d.p. Fong Galleries

Now through January 17, 2004

Open Tues-Sat 1pm-6pm

383 S. 1st St., San Jose, Ca. 95113

408-298-8877

Slide LECTURE by Therese, January 8, 7pm

Enter thru the shop next door, the Wine

Galleria@ 377 S. 1st St.

<http://www.ultisys.com/trilogy/dpfong.html>

www.theresemay.com

Nana Montgomery was featured on Simply Quilts in November as "The Surfing Quilter." The production crew came up to Santa Cruz to film her and her quilts for a segment. The show debuted on November 21, 2003 and should be replayed during next year. There's more info available on the Simply Quilts website.



Experienced Quilt Photographers!

Need professional photos of your quilts for applications to juried shows? Here are some suggestions from fellow CQFA members.



From Karenina Grun-Louie: "My husband, **Eugene Louie**, is a professional photographer (for the San Jose Mercury News) and can do this work. You can reach him at elouie@pacbell.net or call him at 408-997-6142 (home) in the evenings or weekends."



Richard Johns of Superior Color in San Jose was mentioned by a number of members. Therese May reports that he has been photographing quilts for years and offers reason-

able prices. He has taken all of the professional photos for Nana Montgomery's show applications and does work for the San Jose Museum of Quilts & Textiles. He has done a few quilts and several dolls made by Judy Wagstrom and "did a great job of them all". Laurie Roberts got "some wonderful prints and color transparencies at a decent price". She also suggested that if several quilters did a group session with one set-up, there might be a price break.

Richard Johns

420 South 14th Street, San Jose 95112

(408) 855-0144

richardjohns@sbcglobal.net

at

Superior Color Lab

1202 Lincoln Avenue #106, San Jose

(408) 287-7884



Maria Klein offered this: "I have a great recommendation for a photographer. My mom who is a painter uses him, and I've had him take photos of my quilts. His name is Jim Dewrance. He plays an awesome blues harmonica too!" **James Dewrance** Photography

408-286-3979

jimmydblue@earthlink.net



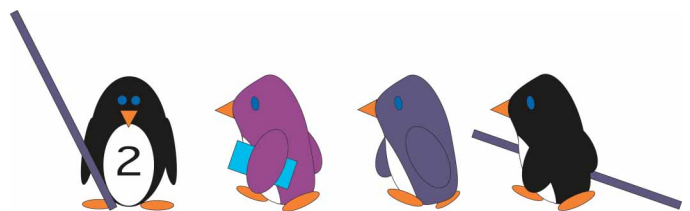
If you're looking for a photographer in the North Bay, Jaye Lapachet recommends **Black Cat Studios** in Marin county (San Rafael). "They do wonderful work and can be reached at: (415) 459-1495 or at info@blackcatstudio.com."



A final suggestion, from Jan Presley of **Jeff Carlick**, who uses a digital camera.

e-mail: captaineos@earthlink.net

Web page: carlickphotography.com





Making Silk Paper

At the November meeting, Debbie Wambaugh demonstrated a simple procedure for fusing silk fibers into an elegant silk “paper” which can then be incorporated into art quilts or other art projects. Here’s the list of websites that Debbie provided:

Basic Instructions

http://www.meinketoy.com/silk_paper_inst.htm
Quilting Arts Magazine Spring 2003, page 50
http://www.quiltingarts.com/level_2/Shoppe/Retail/backissues.html

Fibers/Supplies

<http://meinketoy.com/catalog2.htm?category=Fibers>
http://www.thesilkworks.com/Online_Store/Papermaking/papermaking.html
<http://www.treenwaysilks.com/>

Examples/Pictures

<http://www.treetopscolors.com.au/SilkPaper/SilkPaperGallery.htm>
http://www.mountainartcenter.org/fibers_of_america.htm

Books

<http://meinketoy.com/catalog2.htm?item=12>
http://www.dickblick.com/zz715/50/products.asp?param=0&ig_id=4462

Video

<http://www.treenwaysilks.com/fusion.html>

Thank you Debbie!



“QUILTERS” On Stage!

The Pinole Community Players present **QUILTERS**, written by Molly Newman & Barbara Damashek with music and lyrics by Barbara Damashek. The show is directed by Janet O’Brien.

Seven women sing and tell their stories of life on the American frontier in the 19th century. They share the events of women’s lives, hardships, laughter and survival through quilts. (Subject matter may not be suitable for children.)

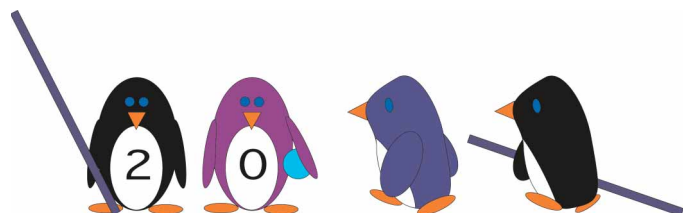
Jan. 16- Feb 14, 2004
Fri & Sat, 8 pm Curtain
Sunday Matinee, 2 pm Curtain
Friday, Jan 23, “2 fer 1”

All Seats Reserved
Reservations must be prepaid
Gen Admission \$15, Students & Seniors \$12

Fri, Jan 16 - Opening Night Gala at the Pear Street Bistro, \$10 tickets at the door

Sat, Feb 14 - Closing Night Dinner and Theatre at the Pear Street Bistro
Call 510-741-8875 for reservations

Community Playhouse
601 Tennent Ave., Pinole, CA
BOX OFFICE 510-724-3669



SHOW OPPORTUNITIES

The Foothill Quilters Guild will be holding their twenty-second annual quilt show, "**Serenade in the Foothills**" on February 28/29, 2004 at the Gold Country Fairgrounds, 1273 High Street, Auburn.

The show will feature continuous live music, demonstrations of quilting techniques, door prizes, a cafe, vendors and the ever-popular Country Store. Admission \$6, Sat 10-5 and Sun 10-4.

Entries of quilts, wall hangings and wearable art from other guilds are welcome.

Quilt entry deadline: Jan 12, 2004

For more information, contact The Foothill Quilter Guild 2004 Quilt Show. P.O. Box 5653, Auburn CA 95604, Auburn, CA 95604 or call Gin 530-889-0450 or Shari at 530-745-0264.



14th Annual National Juried Art Exhibition:
FACES OF WOMAN, A Celebration of the Feminine.

All media. Original work in 2 or 3 dimensions, completed within the past two years. The Juror will be Ellen Landis whose professional experience includes being curator of Art at the Albuquerque Museum, various California museums and collections, as well as curator of painting & sculpture at the Baltimore Museum of Art. Fee: \$15 per entry. Cash Awards.

Deadline for receipt of slides and entry forms is FEBRUARY 16TH.

Exhibition dates: Mar 19 - Apr 16, 2004.

For a prospectus send an SASE to: Las Vegas Arts Council, Box 2603, Las Vegas NV 87701 OR <http://www.lasvegasartscouncil.org>

Call for Entry - **Integrity of Minimal**

Open to all media and disciplines. Artwork created within the last two years and currently available for sale. Images may be submitted as slides. Up to 3 entries. Entry Fee \$25.

Location is the Online Exhibition in Art Management Group's gallery, Art on the Line.

March 12: Deadline, entries must be postmarked

March 31: Acceptance notification made, awards announced (Juror's Choice Award- \$500).

Juror is Ruth Snyderman, owner of Snyderman/Works Galleries, Philadelphia, PA
Exhibition runs April 5 - June 4, 2004

http://www.postpicasso.com/info/Prospectus/integrity_04_prospectus.htm



The Paris Gibson Square Museum of Art, a contemporary art museum located in Great Falls, MT, is looking for a **Native American contemporary quilter** for a traveling exhibition that will open in Montana in July of 04. They are looking for a quilter who combines traditional and contemporary sensibilities in her work. They would welcome any suggestions of artists to consider from our membership. Contact:

Jessica Hunter Larsen

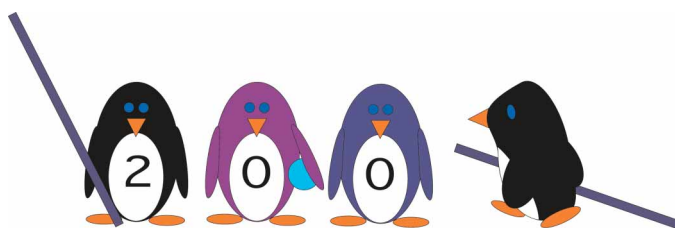
Paris Gibson Square Museum of Art

1400 First Avenue North

Great Falls, MT 59401

Phone: 406/727-8255 FAX: 406/727-8256

email: jessica@the-square.org





*What's Happening at
The San Jose Museum of
Quilts and Textiles*

Currently Exhibiting: Until January 18, 2004
Moe'Uhane Nani: Contemporary Hawaiian Quilts

Although Hawaiians learned the technique of quilting from early European and American missionaries, they quickly developed their own unique and distinctive style of quilt making. Contemporary Hawaiian quilt artists continue this tradition of innovation, producing quilts that incorporate all aspects of modern textile design and technique yet remain infused with that elusive spirit of aloha.

Coming Next: January 27 - March 28, 2004
Captured by the Moment: The Art of Mary Merrill & Elizabeth Barton

Evocative of other times and places, the tapestries of Mary Merrill and the contemporary quilts of Elizabeth Barton present an impressionist view of life. Although painterly in quality, the work of both artists retains the strong physical immediacy of textiles.

Opening Reception February 1, 2004, 2 - 4 pm

San Jose Museum of Quilts & Textiles
110 Paseo de San Antonio, San Jose, CA 95112
Tues-Sun, 10 am-5 pm, until 8 pm Thurs.
Admission: \$5 general, \$4 seniors & students, free to Museum members and children under 13. No admission charge on the first Thursday of each month.

For more information,
please call 408-971-0323 ext. 10
www.sjqiltmuseum.org.

**SEW-QUILT EMBROIDERY
FESTIVAL**

The festival will be held at the San Mateo County Expo Center on February 20-22, 2004 featuring exhibits from the Bay Area sewing, quilting and embroidery retailers as well as manufacturers and designers from all over the US and Canada. Also included are free seminars and demonstrations, In Booth Make & Take Its, workshops, fashion shows, a Hoffman Challenge Exhibit, quilt display and lots of shopping.

For Seminar/Workshop schedule & pre-registration form, send self addressed stamped envelope to: PCM, PO Box 70007, Reno, NV 89570-0007

General admission is \$7, but a \$1.00 off COUPON can be downloaded from
www.pcmexpo.com

Web Sites to Visit

Fabric Trends Magazine is a recently launched publication from All American Crafts Inc., publisher of The Quilter Magazine. Check out their website at <http://www.fabritrends.com>

Cottonwood Quilts - Beginners Block of the Month, lots of quilting information, and a newsletter that answers readers questions.
<http://www.cottonwoodquilts.com>

Penguin graphics were designed by penguin fanatic, Hanna Scardina, age 13, of San Carlos.

