
CQFA Newsletter



CQFA Volume No. 17 Issue No. 1 February 2002

Happy Chinese New Year!!

2002 MEETING DATES:

- March 2**
- May 4**
- July 6**
- Sept 7**
- Nov 2**

All Meetings are Saturday at 9:30

Meeting Place:

Trinity Methodist Church,
Fellowship Hall
748 Mercy Street
Mountain View, California
Meetings start at 9:30am

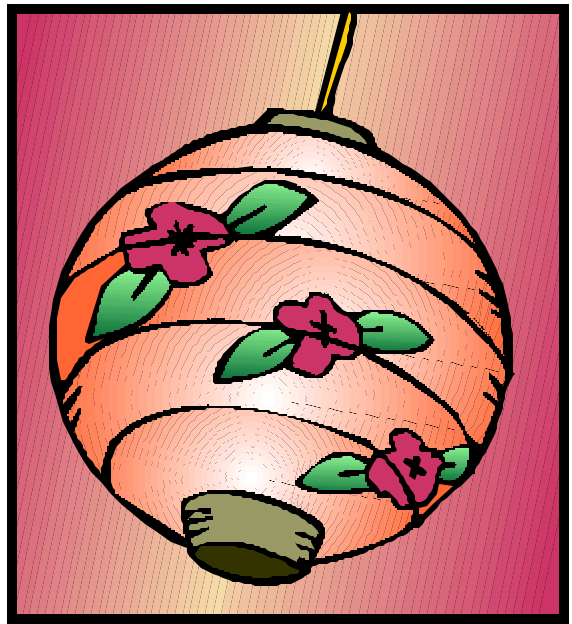
CQFA WEBSITE:
<http://www.cqfa.org>



Letter From Your New President

It is beginning to look like Spring and our March meeting is almost here. On March 4th, we will have Sylvia Marie Polk speak at our meeting. I will let Joy -Lily tell you more about her later in this newsletter. I will not be at the meeting as I will be on vacation. Laurie West-Roberts will be the meeting facilitator in my absence.

Our last meeting featured Karen Boutte who shared with us stories of African American quilts and their



quiltmakers. She was assisted by Susan Grey, who is the driving force behind the Raging Light Project. Afterwards some people enjoyed a workshop where we made fantasy fabric. Those of you who stayed until the end and helped clean up, pat yourself on the back. You did a great job. Thank-you.

I hope you all enjoy the March meeting and the beautiful spring weather.

Debbie

March Meeting

Our speaker for the March Meeting will be Sylvia Marie Polk. She will be presenting her lecture: "Adventures in Creativity"

Sylvia Marie Polk is a graduate of the prestigious City and Guilds Embroidery Course of London England. She will treat the audience to a visual delight of many design

CQFA Newsletter



boards, working binders, and art pieces she produced throughout the four year course. She will offer tangible ways to mobilize your creative energy and keep it flowing. After the lecture Sylvia will stay to allow us plenty of time to explore her copious binders and samples and discuss them with her.

JANUARY MEETING

picture from Virginia King



<http://www.karenboutte.com>

Meeting Place:
Trinity Methodist Church,
Fellowship Hall
748 Mercy Street
Mountain View, California
Meetings start at 9:30am



Dues Are Due for 2002

Two Tens and a Five for Two Thousand and Two.....

Dues are Due for Two Thousand and Two! It's true. Oh, too true that your dues have come due. Two tens and a five for 2 0 0 2!

And, as is typical with CQFA, you have options for paying dues. If you'd like to renew and enjoy the group again this year, you may send a check made payable to CQFA to our Treasurer, Judy Martin, at 10196 Camberley Court, Cupertino, Ca 95014. Or, bring your dues to the January 5 meeting and save postage, envelope costs, licking efforts, trip to the post office and all that!

Or - - Don't pay and wait for the cute past-due notices that go out in March and June before Membership starts playing pogo on the delete key. It would be lovely to spend the volunteer efforts doing something more creative than wresting dues from otherwise marvelous people (yes, Ladies! We have M-E-N in the guild!), so, gather your funds about you and make plans for dues paying!

I know that you know - - we ALL know - - that begging for dues is unpleasant.

THE END

CQFA Newsletter



OPPORTUNITIES!



Quilt National '03

Information about entering Quilt National '03 is now available at the QN'03 portion of the Quilt National internet site <http://www.quiltnational.com>


There are several options for downloading the rules and regulations and also for the actual entry form itself.

Those artists who are unable to acquire the information from the web site may request a printed form. Requests received by February 22nd will be sent in the mail. Requests for entry form after that date will need to be accompanied by a stamped self-addressed business size (#10) envelope.

Please bear in mind that although we have made every effort to make the on line information "friendly" for the greatest number of computer systems and set-ups, there may be people whose systems and computer sophistication will make requesting the printed form a better choice.


If you have any questions, do not hesitate to contact me QN@dairybarn.org.

Thank you for your cooperation.
Hilary Fletcher, QN Project Director




The New England Quilt Museum is extending the entry deadline for our exhibition Colors of the Season: Autumn to March 15. You can print out the rules and regulations from our web site at <http://www.NEQuiltmuseum.org> or send SASE to:
The New England Quilt Museum
Colors of the Season
18 Shattuck Street


Lowell, MA 01852



Tahoe Arts Project(TAP)-Lake Tahoe Festival of Fine Arts Entry Deadline 4/5/02. Application can be obtained by mailing a SASE with 1 oz. postage to: TAP, P. O. Box 14281, S. Lake Tahoe, CA 96151 or e-mail to tahoearts@aol.com



The Whistler House Museum of Art and The Professional Fiber Artists of New England are calling for entries for a juried exhibition of art quilts. "Art Quilts At The Whistler," the newest addition to the Lowell Quilt Festival, will be held August 14-August 31, 2002. The deadline is April 8, 2002. For a prospectus please send an SASE to: Art Quilts at the Whistler, The Whistler House Museum of Art, 243 Worthen Street, Lowell, MA 01852-1822.



If you know of any other shows that CQFA members might be interested in entering, please send me the information, and we'll publish it. These show notices are gathered mostly by your newsletter editor, and I will be the first to admit, I am not the most connected fiber artist around, someone must have more and better information on show opportunities than me!!

If you would like to take charge of gathering this information for our group, then the Show Opportunities job is for you, and it is OPEN. Please contact Debbie Wambaugh if you are interested.

Upcoming Shows/Events

East Bay Heritage Quilters presents Voices in Cloth 2002 at the Oakland Convention Center, 550 Tenth Street at Broadway, Oakland, CA on March 16 & 17. For more information, <http://www.ebhq.org> or e-mail lcrookca@pacbell.net

CQFA Newsletter



Tokay Treasures Quilt Show, March 23 & 24 in downtown Lodi at the Eagles Lodge at 21 W. Oak Street

Now Showing At the San Jose Museum of Quilts and Textiles:

January 26, 2002-March 17, 2002

Continuing Concepts: Works in Series by Kathy Weaver, Barbara W. Watler and Heather Waldron Tewell. An exhibition of recent textile art from three contemporary artists, each working in a closely-related series.

Opening reception: January 27, 2002, 2:00-4:00pm.

<http://www.sjqquiltmuseum.org>

Museum is open 10AM - 4PM Tuesdays through Sundays. 110 Paseo de San Antonio, San Jose
For more information call (408)971-0323

AMERICA: From the Heart Traveling Exhibit

The touring exhibition of AMERICA: From the Heart, consisting of 125 of these incredibly moving quilts, opened in Cary, NC at the Page-Walker Arts Center. Other venues already committed to show the tour quilts are shown below:

- * Patchwork & Quilt Expo -- Palacio de Congressos, Barcelona, Spain -- April 4-7 (selections from the exhibit only)
- * Spring Quilt Market -- trade show with this exhibit and the Bernina Fashion Show open to the public -- Kansas City, Bartle Hall -- May 17-19
- * NYQuilts! -- important regional show at Russell Sage College in Troy, NY -- June 8-9
- * Embellishment -- Oregon Convention Center, Portland Oregon -- July 18-20

I am working on establishing other venues for this touring exhibit, and I certainly appreciate the help I have received from quilt artists. You have made

wonderful suggestions, given me leads, sent me names and phone numbers, and in general, helped tremendously. If any of you reading this have contacts with museums, art centers, galleries, shows, etc. that might be interested in the AMERICA quilts, please let me know. My dream, of course, is to ultimately have the exhibit on display in Washington, DC and in New York City this September to mark the one-year anniversary of the terrorist attacks, but finding suitable venues in those cities with open dates is not the easiest challenge I've ever faced!

It was also quite challenging to curate the exhibit and narrow the almost 300 quilts down to 125. The choices were made to present a balanced exhibit, and depended, in some cases, on the availability of the quilt, particularly those involved in the Silent Auction. There, I had to depend on the generosity of the new owners, rather than the quilt artists, and it was heart-warming to see how many owners responded positively. As it turned out, many of them were quilters themselves and were thrilled to have their AMERICA quilts on tour where even more people could be both inspired and comforted by seeing them.

However, please remember that not every venue can show every quilt because of space limitations, and a few of the quilts could only be loaned for part of the tour, due to previous commitments.

The quilt artists whose work was selected to be featured in the touring exhibition include CQFA members: Jean Dunn and Julie Stiller; My thanks to all of these talented artists, first for making such stunning quilts so quickly, and second for allowing them to tour with the traveling exhibition. I hope that each of you will find an exhibit located close enough to you that you will be able to see this remarkable exhibit. It is truly a once-in-a-lifetime experience. *Karey Bresenhan*
Curator, AMERICA: From the Heart
Director, International Quilt Festival, Houston

CQFA Newsletter



CQFA WEBSITE

-Karenina Grun-Louie



And as always our website is located at:

<http://www.cqfa.org>

We always need photos, photos, photos of your wonderful fiber art to let everyone know what a fantastically creative group of people we are! There are a number of ways you can submit photos in order to get them on our web site. They are (in preferential order):

- 1) E-mail a .jpeg image (file extension .jpg) to karenina@mac.com
- 2) Send photos or slides to:
Karenina Grun-Louie
6448 Berwickshire Way
San Jose, CA 95120

In addition to your images, it is important to provide all information that you would like included with the image - title, year completed, size, materials / method used to construct your art, any comments about the art, and if you want to have the ability for viewers to contact you directly, your e-mail address and a note giving permission to include it on the site. NOTE: I do not recommend giving personal information other than your e-mail address. If you are contacted by e-mail and you decide to give further information, that would be your choice. For those of you who are interested in selling your work, you will probably want to give permission to include your e-mail address. Due to the number of artists in our group, the maximum number of images, per artist, that will be displayed at one time will be two images. If you submit more than 2 images, images may be changed from time to time as the site is updated.

Two New Magazines Reviewed:

-Elizabeth Guilmette

“Expression” is a new magazine whose emphasis is encouraging creativity, 130 colorful pages with 21 artists’ projects illustrated. There are also many interesting ADS. Projects include paper arts, book arts, beading, polymer clay, dolls, stamping on fabric, decorative painting on a recipe box, collage and icons (assemblages using Sculpy “tiles”).

1 Year (6 issues) \$19.95 EXPRESSION MAGAZINE P.O. BOX 85103, San Diego, CA 92186-9932

Another new magazine is “Quilting Arts” which may be of more interest to fabric artists. The three issues I have (#2, #3, & #4) have articles about painting on fabrics, Yvonne Porcella’s burned silk applique, silk ribbon embroidery, beading, embellishment, flip & sew foundation piecing, ruching, buttonhole stitch variations, art quilts, felting, dyeing threads, laces & trims with instant-set pigment dyes, punch needle embroidery, couching fancy threads, plus profiles of fiber artists and their works ... each issue a visual and inspirational feast.

1 Year (6 issues) \$24.95, Quilting Arts Magazine, P.O. Box 685, Stow, MA 01775

BOOK REVIEW!!!

- Elizabeth Guilmette

Book: “Creative Embellishments” (Rodales’ Successful Quilting Library) \$16.95 from I Love Quilting Book Club.

Chapter Headings are: Couching, Beading, Hand Embroidery, Machine Embroidery, Stamps, Pintucks, Machine-made lace, Innovative Trimmings (e.g., metal mesh, old Jewelry, washers, buckles, shells, etc.) Dimensional Flowers & Leaves, Memorabilia, Atmospheric Effects (e.g., undersea), Putting on Glitz (e.g., lame, rhinestones, mirrors, glitter, etc.), Directing the Eye, Embellishing to the Rescue (creative solutions), Extraordinary Sashings, Taking Trims to the Edge + A

CQFA Newsletter



Gallery of embellished blocks by various artists. At the end of each chapter is a Problem Solver page and there are TIPS boxes in the margins throughout the book + an Embellishment Glossary and Artist's profile for each writer. Excellent color illustrations throughout, including hands-on working photos. This book is worth it's weight in gold for all the ideas within.



Looking forward to spring!

CQFA Officers and Helpful People for 2002

Got an Idea? Want to Help Out? Have a Burning Questions? Here's a list of people who are active in CQFA and might be able to help.

President

Debbie Wambaugh (831) 338-2245 scruzmtn@cruzio.com (home)

Principal Elf

Virginia King 650-965-4510 ginnymichael@aol.com (home)
yking@wsgr.com (work)

Vice-President

Laurie West Roberts 408-371-1515 RLRobert@pacbell.net

Program Chair

Joy Lily 415 826-8248 fiberjoy@dnai.com

Treasurer

Judy Martin 408-996-9059 judy@rahul.net

Membership

Judy Wagstrom 650-967-2772 jwagstrom@yahoo.com

Newsletter

Julie Z. Stiller 831-338-4831 juliezs@pacbell.net

Show Opportunities:

OPEN [See/call/email Debbie Wambaugh if you're interested!!](#)

Quilt Museum Liaison:

Nancy Rushton 408-865-0305 nancyrush1@aol.com

Marina Salume 650-595-3364 quiltnut1@home.com

Newsletter Mailing:

Sylvia Gegaregian 650 851-3962 sgegaregian@yahoo.com

Web Site:

Karenina Grun-Louie 408-997-6142 Karenina@Mac.com