
CQFA Newsletter



CQFA Volume No. 16 Issue No.2 April 2001

2001 MEETING DATES:

May 5
July 7
September 1
November 3

All Meetings are Saturday at 9:30



MAY MEETING/WORKSHOP

Ladies, Quilters, Dollers, Dyers, Piecers (check all that apply) I wish you all a Happy Spring! Our May meeting is fast approaching and few are as aware of that as I am! We are just plum without a program. Finally it has happened, as I've worried it might for lo these many years; no program. Hey - doesn't someone want to tackle scheduling some programs for us? You can't do any harm at this point! I do apologize to all, but (naturally) I have an idea.

Let's bring some unfinished projects and work on them using the big tables at the Hall. Piece some things, experiment with borders for some specialty centers, sew or glue up (or hinge) some more doll parts a la Mac, sit and talk or do an elaborate show n'tell! I know many times one of us shows work during the meeting and people are curious about the process. Why, we could gather 'round a table afterwards and possibly SEE how to do "it". Hope this works! This suggestion is one of those *it's what you put into it that counts* ideas.

Speaking of a Program Person or Persons, please also keep in mind our Membership slot. Marsha has done this for **years** and would like a break. How about Y-O-U? If you're interested, let me know! You'd be sitting at the table inside the door on meeting days (the world will not grind to a halt if you're unable to attend a few times - just have your friends fill in), help our Visitors and direct any members with questions. You'll also maintain our database with current information on members and send us copies online as it's revised.

Julie has reminded me that Fiber Expressions IV will coincide with PIQF - a good thing and a bad thing. Some of you will need to produce TWO works between now and September. Keep this in mind as your machine chugs along! Two, Two, Two quilts to do! Not

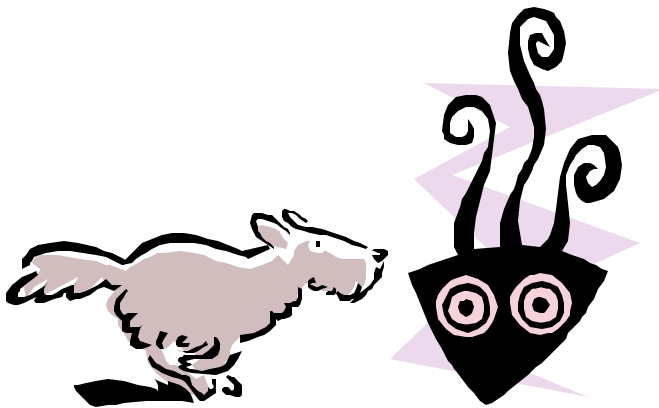
CQFA Newsletter



necessarily! Fiber Expressions IV is not limited to quilts; you could enter a Doll a la Mac, a doll non-Mac, a wallhanging that's not quilted or a garment. We're FIBER, right! Don't even be limited by my suggestions above - this is an open-minded bunch! (so think up a program, will ya?). OK. You get my point.

I'm jazzed for the May 5 program and will definitely have a Show n'Tell of my own from the Jane Dunnewold (author of *Complex Cloth*) 3-Days in Paradise class that a lucky few of us took. Jane is One Wonderful person in all the ways I can think of. If you can ever make the chance for yourself to go down to San Antonio (Texas, not Palo Alto!) and take ANY class from her, you'll just never be sorry. I'll also be bringing the premier issue of *Belle Armoire* magazine. And Wally, of course :-)

Take care, everyone. Stay dry and warm until we meet again. Yours always, Va.



Bring Your Dolls and Dogs

All dollers from Mac's March class are invited to bring their dolls (OK - or their doggies) to the May meeting. Needless to say, most of us created some fashion of doll, but then there was Kathy Galos whose doll was a dog! Everyone who took Mac's doll class left that day with the

most exciting assemblage of peaked noses, popping eyes, tubby tummies and some antlers!

The instructions were absolutely first-rate and the class incredibly well organized. Mac had previously sewn various body, head and leg shapes (which were interchangeable, of course) with openings left for turning and stuffing. This degree of teacher prep and concern for the students' experience meant we didn't have to drag in machines, or spend time selecting fabrics and stitching. Each student dove right in to stuffing techniques (there's a LOT to learn about stuffing!) and location of body parts. Did I mention that Mac brought stitched arms and legs, too?

A big part of the class was learning the ladder stitch for attaching parts to parts neatly, quickly, and invisibly! (Surgeons R US!) Once that was accomplished, we moved right on to embellishments. Lest I spoil the surprise for May 5, just let me say that CQFA members specialize in embellishment and these dolls (and DOGS, wicky-wocks and anything else!) show it.

Bring your "wicky wocks" and bring yourselves. I'm sewing a tail on my wicky wock this weekend and just knew she'll be proud! See you at Show N'Tell!

TO MARKET, TO MARKET

And now a reminder - we've decided that it's OK to bring hand-made fabric items that you'd be willing to sell to your co-members to each meeting. Just put them out on a table and include some prices and your name. This is an informal happenin' that everyone seems to enjoy! So, bring fabric, dolls, quilts or any size, even bags of scraps and see if one of us would trade you some money for them!

CQFA Newsletter



CQFA 2001 Show Planning Continuing Full Speed Ahead!

-Virginia King

Fiber Expressions IV, our 4th quilt show will be displayed in the Mountain View City Hall, 4th floor gallery during the month of October this year.

We're still looking for volunteers to assist with all aspects of putting this show on. Time is of the essence for notifying the magazines and journals, so please call me at 650.965.4510 if you have any interest at all!

What are the requirements for the show? You must enter something made out of fiber, quilt, doll, wall hanging, etc. You need to be a dues-paying person. You need to help out with the show also, so volunteer!

Based on our Show n'Tell meetings this past year, Fiber Expressions IV will be a truly creative, special show. We do very little judgmental stuff and almost no editing for the show. Your work doesn't have to match the jurors "look" to be included. This is a RARE opportunity! Let loose, let fly! Use puce and don't be shy.

Meeting Place:

Trinity Methodist Church,
Fellowship Hall
748 Mercy Street
Mountain View, California
Meetings start at 9:30am



OPPORTUNITIES!

New Quilts of Northern California - deadline for entry is August 15th. Jurying on August 28th, acceptances sent by August 30. Send a color picture or slide of the full quilt and a close up with the title and dimensions of the quilt and your name on the back of the pictures to:

New Quilts of Northern California, 2935 Sloat Road, Pebble Beach, CA 93953

This juried show is presented at the **Pacific International Quilt Festival** which is October 4 -7, 2001 in Santa Clara, CA.

Art/Quilt Magazine Non Contest Contest, theme is 2001.

Quilt less than 2 feet in size. Displayed in the Art/Quilt Magazine booth at Houston International Quilt Festival in October/November, 2001. Send SASE for 2001 info to Art/Quilt Magazine, PO Box 630927, Houston, TX 77263-0927
<http://www.ArtQuiltMag.com>

Tactile Architecture 2001, Modern Art Quilts with Architectural Themes. Quilts Inc., 7660 Woodway, Suite 550, Houston, Texas 77063. Deadline June 29, 2001.

<http://www.quilts.com/tactilefront.htm>

Winter Celebration 2002 Quilt Contest, theme is *Peace Among Nations...One Piece at a Time*. Quilts to be displayed during the winter olympics. Deadline is August 15, 2001.

Winter Celebration 2002, P.O. Box 95008, South Jordan, UT 84095-0008 <http://www.utahquiltguild.org/2002rules.htm>

If you know of any other shows that CQFA members might be interested in entering, please send me the information, and we'll publish it.

NCQC Announces: A Course on Judging Quilts and Wearable Art

The Northern California Quilt Council (NCQC) is very pleased to announce their sponsorship of **A Course on Judging Quilts and Wearable Art**. This course is designed to provide participants with the skills necessary to evaluate quilts and wearable art competently, objectively, and diplomatically. Course content will include:

- Comprehensive coverage of the key elements of workmanship and design in all types of quilts and in wearable art.

CQFA Newsletter



- Multiple "hands-on" sessions to provide real experience in the evaluation process.
- Explanations of the administrative aspects of judging quilts and wearable art, including all facets of the judging arena and the responsibilities of each participants in that arena.

The course will provide valuable training to everyone interested in working in any position in the judging arena, and to all quilters interested in improving their work.

This three day course will be offered on these dates:

- **June 14, 15, 16 and 17** at the **Dominican University in San Rafael, California.** (Note: Students will arrive in the afternoon of the 14th, and the introductory class session will be that evening.)
- **October 4, 5, and 6** at the **Pacific International Quilt Festival in Santa Clara, California.** The fee for this class is \$350 and does not include lodging and meals.
- **In August, 2002** in conjunction with the **Great Pacific Northwest Quiltfest in Seattle, Washington.**

The administrator for this course is Helen Powell, and the instructors include Elizabeth Marrs, Kathleen O'Connor, Heather Tewell, and Janet Paluch.

The response to plans for this course has been overwhelmingly positive, and NCQC thanks everyone involved in the planning of the course for their support. For more information or for an application, please call Helen Powell at (916) 451-7638, or send her a fax at (916) 736-0558. If you are interested in the first class, please call as soon as possible, as it is filling up quickly.



QUILTERS: NCQC NEEDS YOUR HELP!

The Northern California Quilt Council (NCQC) needs your help in gathering materials to be used as part of the **Course on Judging Quilts and Wearable Art.**

As part of the course, students will be evaluating **multiple** quilt blocks, and we need **lots and lots** of blocks! If you have any blocks that you can give to us to use in the course we would be very grateful. We need examples of **all types** of quilting techniques, which demonstrate **all levels** of construction ability. Please mail the blocks to: Judy Mullen 1103 East Edison, Manteca, CA 95336.

Upcoming Shows/Events

March 24 to May 24 "Tour de France" challenge quilts made by members of the Pajaro Valley Quilt Association and French quiltmakers. Back Porch Fabrics Gallery, 157 Grand Ave. Pacific Grove. (831) 375-4453. Monday thru Saturday 10 to 5pm. Sunday 12 to 4pm

At the San Jose Museum of Quilts and Textiles:

Redwork, History Revisited. Through May 20th.
Fine Focus and Wide Angle May 25th through July 15th. In **Fine Focus**, curator Sandra Sider brings together 50 contemporary quilt artists who took up the challenge of making quilts in a small format. **Wide Angle**, and exhibition by the Museum will consist of large scale quilts made of many small pieces.

<http://www.sjqiltmuseum.org>

Museum is open 10AM - 4PM Tuesdays through Sundays. 110 Paseo de San Antonio, San Jose
For more information call (408)971-0323

CQFA Newsletter



From your Newsletter Editor -Julie Z. Stiller

Hello again everyone, well here we are into spring already! I'm having the usual problem of being pulled in two directions at once at this time of year. Out into the garden to weed, plant, etc. and into the studio to create more artwork. So my solution this year is to do my surface design work outside in my garden. Over the winter my husband made me a simple table that I can spread out three yards of fabric on, and it is at the right height for me (no backaches yay!). So far I have been painting with Setacolor and using the abundant weeds to get some interesting sunprints. Unfortunately my cat has decided that he really needs to help me with my fabric painting, so be looking for some sunprint cat inspired work from me soon, complete with pawprints and painted cat hair! Ooh, so much texture....

Hope everyone is having a wonderful spring so far, and I look forward to hearing from you with submissions for the newsletter and also any comments you might have for improvements in the newsletter.



NEWSLETTER SUBMISSIONS:

Due the 15th of the month to make next months' newsletter.

Next deadline is JUNE 15

Email to juliezs@pacbell.net or call (831)338-4831 or mail to:

Julie Z. Stiller

1251 Highland Drive

Boulder Creek, CA 95006

ON THE SUBJECT OF SLEEVES

excerpted from an email to the QuiltArt mailing list with kind permission from the author *Karey Bresenhan*

Years ago, when Nancy and I did the Texas Quilt Search, part of that project was a quilt conservation workshop involving several textile conservators, including Patsy Orlorsky, author of the great "Quilts in America." The workshop was followed by a laboratory session in which the quilts were prepared for travel. (These were all antique quilts.) This preparation included putting sleeves and temporary backs on the quilts that were to tour the museums. The conservators were quite definite about the purpose of the sleeve and how to put it on, and I thought it might be useful to share this information with the list. This information came to mind when I read a few postings on sleeves. If you don't want to know about sleeves, don't read on!

First, the purpose of the sleeve is to provide a means of displaying the quilt without harming it. The key there is the last three words: without harming it. Therefore, the conservators shocked, but finally convinced, the quilter audience by requiring that every third stitch used in sewing the sleeve to the back of the quilt go through to the front of the quilt! The purists, yours truly among them, almost died. We were horrified. "You mean they'll SHOW? On the FRONT of the quilt?" You could see quilters all over the room bristling, thinking to themselves, "over my dead body!" But here's the rationale, and it eventually won us over (as did a rather vivid memory of "Leda and the Swan," a quilt that had traveled in an early Smithsonian traveling exhibition, in which Leda's two "natural attributes" sagged further every time the quilt was shown!). They explained that the sleeve does not only provide a place for insertion of a rod for hanging, but that the entire weight of the quilt is actually supported by the stitches that hold the sleeve in place. If the stitches go through the back only, then over time, the back can separate from the front. If the stitches go through the back and batting only, the same thing can happen. The only way to be sure the weight of the quilt is completely supported is to take the stitches through to the top of the quilt. They compromised on every third stitch because they said, in their experience, no quilter could ever be convinced to let every stitch show on the top!

As quilt artists, you're in the unique position of being able to take advantage of the curators' advice and still make those (continued on page 6)

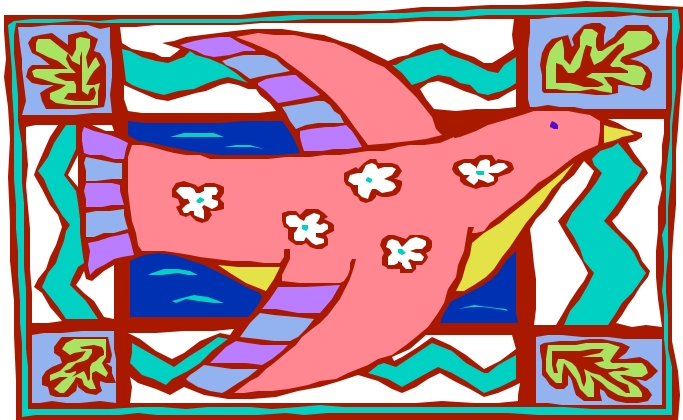
CQFA Newsletter



sleeve stitches a design element that doesn't detract from your quilt. I think it would be interesting to see the solutions you'd come up with.

Also, a few more tips about sleeves. Some people just stitch tabs to the back instead of a full sleeve. Others use a single layer of fabric stitched down so the quilt itself forms the back part of the sleeve. As a show organizer, I implore you not to do either of these things. When the hanging team inserts the rod under either of these methods, it is easy for stitches to catch and break, even if one is being careful, particularly if fragile fabrics have been used. Please use a double sleeve (a tube of fabric) to protect your quilt from inadvertent damage.

Also, judges sometimes look with approval on sleeves that have been planned not to detract from the back of the quilt, instead of being an obvious add-on, but I don't believe they let that interfere with their judging. However, I know that some professional art quilters make a point of constructing their sleeves out of a color or fabric that adds to the appearance of the back of the quilt, because they want a finished appearance.



As to safety-pinning your sleeve to your quilt, I would urge you not to do this. For one thing, it's way too easy just to leave the sleeve that way permanently! Inertia rules... For another, you do not have the advantage of the stitches supporting the weight of the quilt. We sometimes have to pin sleeves to quilts in our special exhibits (because the quilts were shipped to us without sleeves), but we always worry about it. One year a collector's quilt was sent late, without a sleeve, so we had to use safety pins to pin one on. We didn't notice it at the time, but when the quilt was returned and inspected with a magnifying glass, it was found that tiny threads in the fabric had been caught by the pins and either snagged or pulled. If the quilt artist had just put a

sleeve on his or her quilt in the first place, the damage could have been avoided entirely.

If a contest you plan to enter has a sleeve specification, it's not smart to ignore it! Those specifications can make the difference between your quilt being shown, being shown to the quilt's advantage, or not being shown at all. Not every show uses the same size rods that are inserted into the sleeve. For example, in Houston, we use aluminum rods that were once 2" in diameter and are now more often a minimum of 3" and getting fatter all the time. In some cities, the rods are almost 4" in diameter! We ask for a 4-5" double sleeve. The 5" gives a little extra leeway for us in inserting the rods. Even though there is more to be said on the subject of sleeves and hanging quilts at shows, I'm even boring myself so will leave you with just one last thought: Please don't look on sleeves as a necessary evil that you tend to resent...look on them as a way to showcase and protect your quilts.

- Karey B.

CQFA WEBSITE

-Karenina Grun-Louie

<http://www.cqfa.org>

We need photos, photos, photos of your wonderful fiber art to let everyone know what a fantastically creative group of people we are! There are a number of ways you can submit photos in order to get them on our web site.

They are (in preferential order):

1) E-mail a .jpeg image (file extension .jpg) to karenina@mac.com

2) Send photos or slides to:

Karenina Grun-Louie

6448 Berwickshire Way

San Jose, CA 95120

In addition to your images, it is important to provide all information that you would like included with the image - title, year completed, size, materials / method used to construct your art, any comments about the art, and if you want to have the ability for viewers to contact you

CQFA Newsletter



directly, your e-mail address and a note giving permission to include it on the site. NOTE: I do not recommend giving personal information other than your e-mail address. If you are contacted by e-mail and you decide to give further information, that would be your choice. For those of you who are interested in selling your work, you will probably want to give permission to include your e-mail address. Due to the number of artists in our group, the maximum number of images, per artist, that will be displayed at one time will be two images. If you submit more than 2 images, images may be changed from time to time as the site is updated.



FUN Image WEBSITES

- Julie Z. Stiller

Not necessarily fiber related, but really inspiring (to me at least), image websites. Who knows, something may inspire you to create another work of art! Enjoy!

Pre-Raphaelite Paintings:

<http://nouveau.net.com/prbpassion/index.htm>

Nasas' Visible Earth:

<http://visibleearth.nasa.gov/>

Molecular Expressions Photo Gallery:

<http://micro.magnet.fsu.edu/micro/gallery.html>

Art Images Archive:

<http://www.artchive.com/>

Kaleidoscopes:

<http://www.zenzero.com/scopes/index.html>

Astronomy Picture of The Day:

<http://antwrp.gsfc.nasa.gov/>

CQFA Officers and Helpful People for 2001

Got an Idea? Want to Help Out? Have a Burning Questions? Here's a list of people who are active in CQFA and might be able to help.

President

Virginia King 650-965-4510 ginnymichael@aol.com (home)
yking@wsgr.com (work)

Treasurer

Judy Martin 408-996-9059 judy@netuser.com

Membership

Marsha Burdick 408-253-9375 Bburdick@aol.com

Newsletter

Julie Z. Stiller 831-338-4831 juliezs@pacbell.net

Show Opportunities:

Kim LaPolla 650-917-0103 klapolla@markim.com

Quilt Museum Liaison:

Nancy Rushton 408-865-0305 nancyrush1@aol.com

Marina Salume 650-595-3364 quiltnut1@home.com

Church Liaison:

Jessica Bernhardt 650-424-0332 jessicaber@webtv.net

Newsletter Mailing:

Karen Warren 650-961-2519 KEW1@webtv.com

Web Site:

Karenina Grun-Louie 408-997-6142 Karenina@Mac.com